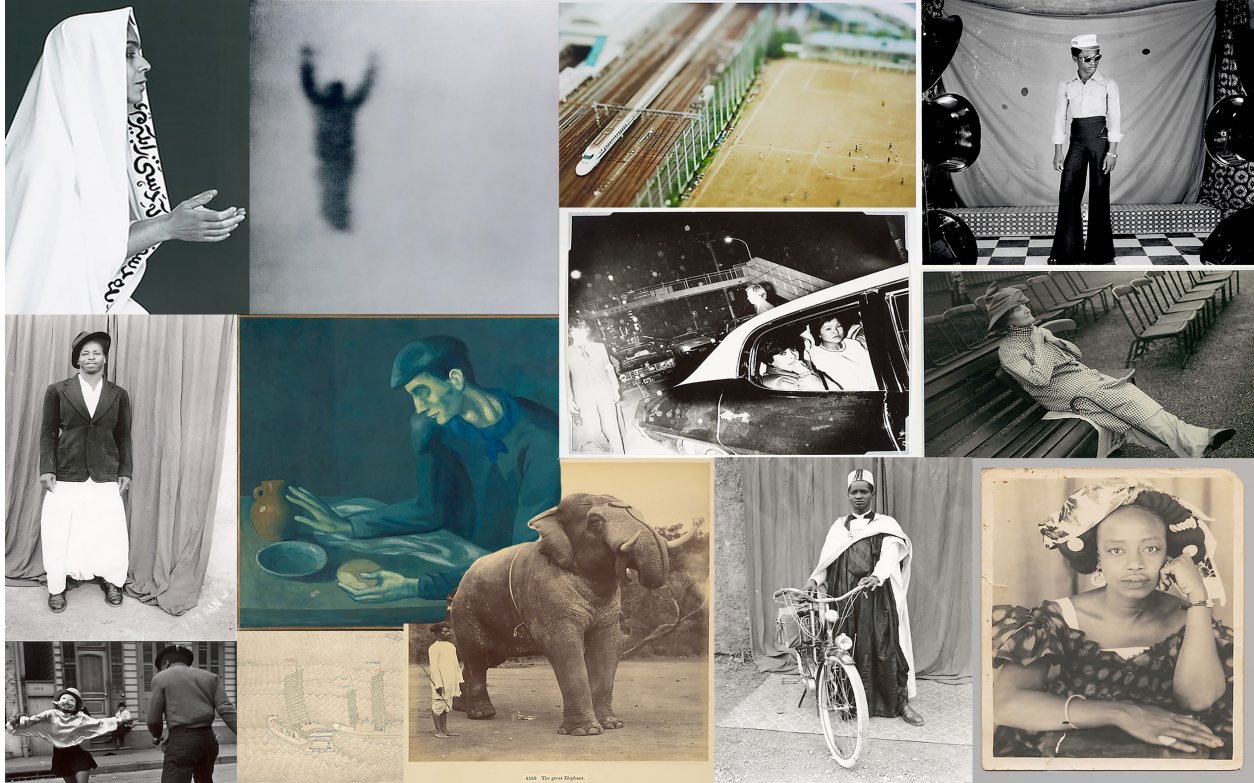


CULTURAL ANTHROPOLOGY
ANT 2410
3 CREDITS
Summer A 2017
UNIVERSITY OF FLORIDA - ONLINE



Images courtesy of The Metropolitan Museum of Art's Open Access for Scholarly Content initiative. Learn more about free online access:
www.metmuseum.org

INSTRUCTOR: Donald Berces, Ph.D. Candidate

Office Hours: Monday 11am-12:30pm, Tuesday 2:30-4pm

Contact: donaldberces@ufl.edu or via e-learning

COURSE TA: Kimberly Abbott (For students last name A-G)

Office Hours: Monday 6-9pm

Contact: kimabbott@ufl.edu or via e-learning

COURSE TA: Ben Burgen (For students last name H-R)

Office Hours: Tuesdays and Wednesdays from 5 to 6:30 pm

Contact: burgen@ufl.edu or via e-learning

COURSE TA: Meghann O'Brien (For students last name S-Z)

Office Hours: Tuesdays 10:30 am to Noon and Thursdays 5:30 to 7pm

Contact: mco75e@ufl.edu or via e-learning

COURSE WEBSITE: <https://ufl.instructure.com/courses/339642>

COURSE COMMUNICATIONS:

We have several avenues for communication in this course. First, there is a general Course Questions Discussion Board where you are encouraged to ask general questions about the course and questions about how to upload assignments. There is also a Discussion Board for the Syllabus. Private questions should be emailed directly to the instructor or TA, or through e-Learning. You can expect a prompt reply during office hours, except during holidays. Please allow 24 hours for replies not posted during office hours.

REQUIRED TEXTBOOK:

Guest, Kenneth

2014 *Cultural Anthropology: A Toolkit for a Global Age*. 1st Edition. New York: W.W. Norton (ISBN: 9780393929577)

* If you are unable to locate a copy of the 1st Edition, you may also use the 2nd Edition for this course.

ADDITIONAL READINGS:

Additional readings will be posted on Canvas.

ADDITIONAL RESOURCES:

American Anthropological Association

<http://www.americananthro.org/>

The Society for Cultural Anthropology

<https://culanth.org/>

American Ethnological Society

<https://americanethnologist.org/>

COURSE DESCRIPTION:

Anthropology is the academic discipline that studies humanity across all space and time. Cultural Anthropology is one of the four major subfields of the discipline, with an explicit focus on the most significant aspects of what it *means* to be human. Cultural anthropologists consider what it means to be human at multiple scales: as an individual, as a product of society and as a maker of history and culture. It's the nature of our human condition to live within structures of symbolism, belief, and power of our own fashioning. These structures become visible to us through critical analyses of religion, art, gender, war, ecosystems, race relations, kinship, colonialism, language, nations and states, mass media, suffering and pleasure. In a word, *culture*. And anthropologists study all this and more. Understanding human culture is crucial to understanding our increasingly interconnected planet and the many problems contemporary society faces. Through this course, you will learn to approach current issues and human behavior holistically, like an anthropologist.

COURSE LEARNING OBJECTIVES:

Upon successful completion of this course, each student will:

- Understand the holistic nature of the study of humans through anthropology
- Understand the broad concepts used in cultural anthropology
- Understand how the anthropological perspective is useful in many academic disciplines
- Develop an understanding and appreciation of the diversity of human culture
- Understand the interconnectedness of our world and how it is being transformed through globalization, development, and migration

COURSE FORMAT: CANVAS

This is an on-line course that uses Canvas to distribute and submit all course materials. You will find the course syllabus, modules, reading assignments, quizzes, discussion boards, videos, grades and course updates and announcements on the course website.

COURSE REQUIREMENTS:

Discussion Boards	150 points 30%
Assignments	200 points 40%
<u>Quizzes</u>	<u>150 points 30%</u>
TOTAL	500 points 100%

DISCUSSION BOARDS 30%

Discussion Board participation consists of 30% of your final grade. You will be broken up into discussion groups to facilitate ease of participation, thus the discussion will not be course wide. **There are two parts to participating in the discussion boards each week.** You are required to write an initial discussion board POST based on the instructions for that week's discussion (15 points). You then must REPLY to at least one of your classmate's posts (10 points). All posts and replies must be original material; plagiarism will not be tolerated.

Initial discussion posts are due by 11:59pm ET on Thursdays each week. Your discussion replies are due by 11:59pm ET on Fridays each week. There will be a total of 6 graded discussion boards. **Both posts and replies must be at least 150 words in length** (a combined 300 words). Please be succinct and always respectful. You will receive zero (0) points if any content from another student or the internet is copied. The rubric for discussion boards is posted in e-Learning.

You are expected to take your posts seriously and review and edit them before posting. Grammar and spelling count toward your grade. Be sure to read all messages in a thread before replying. Always provide a proper reference when using or quoting another source. Do not repeat another post. You must be original; thus, it may be helpful to post early. Avoid short, generic posts such as "Great post!" or "I agree." If you agree or disagree, explain why, in a respectful way, and provide evidence to support your position.

Assignments (40%)

There will also be a written assignment for each week. The assignments are submitted in essay form and are related to the themes for the week. You will be graded based on the quality of the content, following the rubric provided, and by demonstrating that you are familiar with the material that we have covered that week.

Specific instructions for each assignment are described in Canvas. Assignments must be submitted via Canvas by 11:59 p.m. ET on the due date. All assignments must be uploaded in Microsoft Word format (.doc or .docx) and will be processed through anti-plagiarism software. If you attempt to upload your assignment in an incorrect format, Canvas will not accept the file. The assignment will not be graded until it is uploaded in the correct format and might be considered late.

Quizzes (30%)

Quizzes comprise 30% of your final grade. Each module will have its own quiz. Students will be expected to complete all quizzes by the due date provided in the course schedule by 11:59pm ET. If an approved, excused absence is not provided, students should expect to receive a zero (0) for the quiz. If you have a question about a quiz prior to the due date, please use the Course Questions discussion board, or communicate with the instructor or TA no less than 48 hours before the deadline.

When quizzes are made available, you may begin them at any time, but each quiz will have a time limit. Please allow enough time to take the quiz in one sitting, as you will not be able to stop and come back to it.

GRADING SCALE

A	93-100%	C	73-76.9%
A-	90-92.9%	C-	70-72.9%
B+	87-89.9%	D+	67-69.9%
B	83-86.9%	D	63-66.9%
B-	80-82.9%	D-	60-62.9%
C+	77-79.9%	E	0-59.9%

MAKE-UP POLICY:

No make-up work will be offered except for approved excused absences. Documentation must be procured through Dean of Students Office: <https://www.dso.ufl.edu/care/courtesy-letters>

Requirements for make-up exams, assignments and other work in this course are consistent with university policies that can be found in the online catalog:
<https://catalog.ufl.edu/ugrad/current/regulations/info/attendance.aspx>

If you have an event scheduled on the day coursework is due, plan to do the work early. **All coursework is available 24/7 on Canvas.** Students unable to complete assignments due to documented, excused absences must provide documentation to both the instructor and the Dean of Students Office no less than 48 hours before the absence. Verification for excused absences due to illness must be received one week after the coursework due date. All documentation can be submitted electronically to DSOCares@dso.ufl.edu, or hand delivered to 202 Peabody Hall. Confirmation can be verbally verified by phone by calling 352-294-2273. Technology issues while turning in assignments/completing quizzes are handled differently and are addressed in the following section.

COURSE TECHNOLOGY:

In the event that you have technical difficulties with the course, **you must contact the UF Computing Help Desk** either by filling out an online request form or calling (352) 392-4357. The Help Desk is an excellent resource and they are very quick to resolve issues. Once you contact them, they will issue a ticket number detailing the problem and its resolution. **Technological problems (hardware, software, Canvas, etc.) are not sufficient excuses for missed or late assignments without a Help Desk ticket number.**

The Help Desk is located on the ground floor of the Hub on the UF campus. **If technical difficulties that are beyond your control cause you to miss a due date, you MUST report the problem to the Help Desk and then email your instructor and the DSO.** Include the ticket number that you are given from the Help Desk in an e-mail to the instructor to explain the late assignment/quiz/test.

Proof of technological fault must be provided by the student, which will then need to be verified through appropriate channels:

- <http://helpdesk.ufl.edu>
- (352) 392-HELP

ONLINE COURSE EVALUATION:

Students are expected to provide feedback on the quality of instruction in this course by completing online evaluations at <https://evaluations.ufl.edu>. Evaluations are typically open during the last two or three weeks of the semesters, but students will be given specific times when they are open. Summary results of these assessments are available to students at <https://evaluations.ufl.edu/results>.

UF POLICIES

UNIVERSITY POLICY ON ACCOMMODATING STUDENTS WITH DISABILITIES:

Students with disabilities requesting accommodations should first register with the Disability Resource Center (352-392-8565, www.dso.ufl.edu/drc) by providing appropriate documentation. Once registered, students will receive an accommodation letter that must be emailed to the instructor when requesting accommodation. Students with disabilities should follow this procedure as early as possible in the semester.

UNIVERSITY POLICY ON ACADEMIC CONDUCT:

UF students are bound by The Honor Pledge, which states, "We, the members of the University of Florida community, pledge to hold ourselves and our peers to the highest standards of honesty and integrity by abiding by the Honor Code." On all work submitted for credit by students at the University of Florida, the following pledge is implied: "On my honor, I have neither given nor received unauthorized aid in doing this assignment." The Honor Code (<http://www.dso.ufl.edu/sccr/process/student-conduct-honor-code/>) specifies a number of behaviors that are in violation of this code and the possible sanctions. Furthermore, your instructors and TA are obligated to report any condition that facilitates academic misconduct to appropriate personnel. If you have any questions or concerns, please consult with the instructor or TA in this class.

This course will be using systems that check for plagiarism from websites and fellow students. Your instructors can Google too! If there is an infraction, you will receive a warning as well as a zero (0) for the assignment and be reported to the Dean of Students Office. After receiving a warning, if cheating persists, you will receive a zero (0) for the subsequent assignment, be reported to the Dean of Students Office again, and incur any further penalties that are administered by the Dean of Students Office.

Once you have been reported for cheating or plagiarism you cannot drop the class. Plagiarism includes copying from websites or other students or previous work that you have submitted. Self-plagiarism is real and will not be tolerated: you cannot duplicate your work from other courses. Any direct quotes should be properly cited with author, date and page number(s). If you have questions about this, please use the Course Questions discussion board or email your instructors directly. You are strongly discouraged from sharing your notes for this class on any online website. You are not permitted to distribute screen shots of any course content.

Basic guidelines for not plagiarizing:

- Do not copy and paste from any website
- Write your own words
- Do not collaborate with fellow students on any assignment unless otherwise noted
- Use in-text citations when using direct quotes, when paraphrasing, or when citing original research (<https://owl.english.purdue.edu/owl/resource/747/2/>)

CLASS DEMEANOR OR NETIQUETTE:

All members of the class are expected to follow rules of common courtesy in all email messages, threaded discussions and chats. Please use proper greetings and salutations when writing to your instructors and be clear, kind, and respectful. Friendliness goes a long way and will help you succeed in this course and in life.

It is strongly recommended when taking an online exam or quiz that you use a wired connection not a Wi-Fi signal. It is also strongly advised you do not wait until the last few hours to complete any assignment so you can deal with a computer or internet failure. In addition, you should be using the most up to date version of Google Chrome or Mozilla Firefox when using UF's e-Learning interface. If you have any issue with UF e-Learning, you must contact the UF Computing Help Desk immediately at 352-392-4357 to create a ticket that you will then send to your professor so that they may follow up with the issue. The instructor will be the one who decides if the issue warrants further action.

Be advised that waiting until the last few hours limits your options to solve a computer or internet failure. A computer crash or your Wi-Fi dropping out at your location is not an appropriate excuse to retake an assignment. An e-learning system-wide failure that can be confirmed by campus IT as the responsibility of the University is an appropriate excuse to retake an assignment. In such a circumstance, an announcement will be made to all students.

GETTING HELP:

U Matter, We Care serves as the umbrella program for UF's caring culture and provides students in distress with support and coordination of a wide variety of appropriate resources. Contact umatter@ufl.edu seven days a week for assistance if you are in distress. Call 352-392-1575 for a crisis counselor in the nighttime and weekends.

Resources are available at <http://www.distance.ufl.edu/getting-help> for:

- Counseling and Wellness resources
- Disability resources
- Resources for handling student concerns and complaints
- Library Help Desk support

COURSE SCHEDULE

NOTE: Please refer to the schedule in e-Learning for all due dates, it will be the most up to date if any deadlines should change during the semester. You will be notified of any revisions to this schedule via email and e-Learning.

Week	Dates	Online Modules/Topics	Readings
Week 1	May 8-12	Module 1: Course Introduction Module 2: Anthropology & Globalization Module 3: The Culture Concept	Course Syllabus <i>Cultural Anthropology</i> : Ch. 1, 2
Week 2	May 15-19	Module 4: Fieldwork & Ethnography Module 5: Language, Culture, Art & Media	<i>Cultural Anthropology</i> : Ch. 3, 4, 17
Week 3	May 22-26	Module 6: Biocultural Anthropology and Race & Racism	<i>Cultural Anthropology</i> : Ch. 5, 6, 7
Week 4	May 29-June 2	Module 7: Sex and Gender Module 8: Kinship and Social Networks Module 9: Class and Inequality	<i>Cultural Anthropology</i> : Ch. 8, 9, 10, 11
Week 5	June 5-9	Module 10: Religion Module 11: Economic Anthropology Module 12: Migration	<i>Cultural Anthropology</i> : Ch. 15, 12, 13
Week 6	June 12-16	Module 13: Political Anthropology Module 14: Medical Anthropology Module 15: Conclusion and Summary	<i>Cultural Anthropology</i> : Ch. 14, 16

Note: This syllabus represents current plans and objectives. As we go through the semester, those plans may need to change to enhance the class learning opportunity. Such changes, communicated clearly, are not unusual and should be expected.